

# FTU

## Fiber Termination Unit

### Fast and easy fiber termination for FTTH deployment

#### Key benefits:

- Flexible fiber deployment
- Protects fiber from damage
- Eliminates the need for patch cables between passive and active equipment
- Easy click-on of DRG 500
- Provides option for integration with CATV receiver



FTU and DRG 500 coupled.

The DRG 500 series of Digital Residential Gateways can be easily integrated with a Fiber Termination Unit (FTU). The FTU terminates the fiber to the apartment or home, and protects the fiber and connectors until the DRG 500 unit has been installed.

#### Flexible fiber deployment

The FTU is designed for flexible and robust fiber installation, either together with DRG 500 products or as a stand-alone unit. The DRG 500 is connected straight into the FTU without the need for patch cables.

Various fiber types, such as fixed tube, micro ducts and blow fibers can be terminated in the unit. Fibers – with or without a connector and in a variety of different lengths – can be pre-manufactured.

The fiber can be connected to the FTU from four different directions providing full flexibility during installation. The FTU is designed to be wall mounted - upwards, downwards or on its side.

#### Robust installation

The FTU provides fiber protection for the duration of its lifetime. An unprotected fiber and its connectors are vulnerable in the home environment, e.g. to dirt and dust, but even to a number of normal household activities. The fiber can be a danger to children and pets that might inadvertently come into contact with it. These risks are eliminated with the FTU, as the fiber and connectors are protected, both before and after the active equipment has been installed. And last, but not least, it will be saving costs for repairing damaged fibers and connectors.

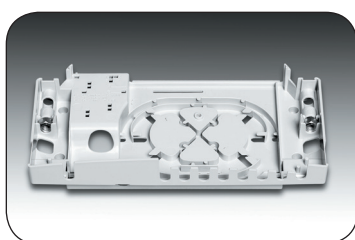
#### Easy cabling

The FTU provides fixing points for all of your cables (fiber, power, LAN and telephony cables), making it also a cable organizer.

An optional CATV module that converts the CATV signal in the fiber to a standard TV antenna outlet can be integrated with the FTU. One pair of fibers can be utilized for both an Ethernet based FTTH and a high quality analogue CATV, allowing for a smooth migration to an all-IP infrastructure. The output power of this module enables multiple TV sets to be used simultaneously.

#### Easy CPE mounting

The FTU is optimized for the mounting of any product from PacketFront's DRG 500 series on top of it, using a simple click-on proce-



Inside the FTU, where fiber is stored.



FTU mounted on wall.



FTU, from bottom.

# FTU

Installation of the DRG 500 can be carried out on an on-demand basis, reducing investment costs for the network, while also making installation easy and less sensitive to damage during installation. Furthermore, there is no need for a patch cable from the FTU to the active equipment, saving costs and again reducing the risk of disruption due to fiber damage.

## Flexible installation process

The FTU allows a flexible CPE installation pro-

cess. The CPE installation, i.e. mounting any product from the DRG 500 series, can be done at the same time as the installation of the FTU, or at a later date (i.e. when the end user wishes to activate the service). This provides network builders and installation engineers with the flexibility to complete the termination of fibers or ducts at a different time to the installation of the active equipment. Also – thanks to the simplicity of the “click-on” concept, the DRG 500 can be installed by the end user him/herself,

which further reduces installation costs. When used as a stand-alone device, any active equipment can be connected to the FTU using a standard patch cable.

## Optional CATV module

The FTU can be supplied with a CATV module, enabling the fiber to carry both IP-based triple-play services and analogue CATV services, (see separate CATV datasheet for more information).

### Mounting conditions

Wall mounting indoors

### Physical

Weight	200 gr, 0.44 lbs
Dimensions	130 mm (H) x 238 mm (D) x 57 mm (W) 5.1" (H) x 9.3" (D) x 2.2" (W)

### Fiber encapsulation

Fiber length	All lengths between 0.9 and 3.5 meters All lengths between 35" and 137"
--------------	--

### Connectors supported

MT-RJ  
SC Simplex  
SC Duplex  
LC  
LCμ, upon request